

BUTTERFLY

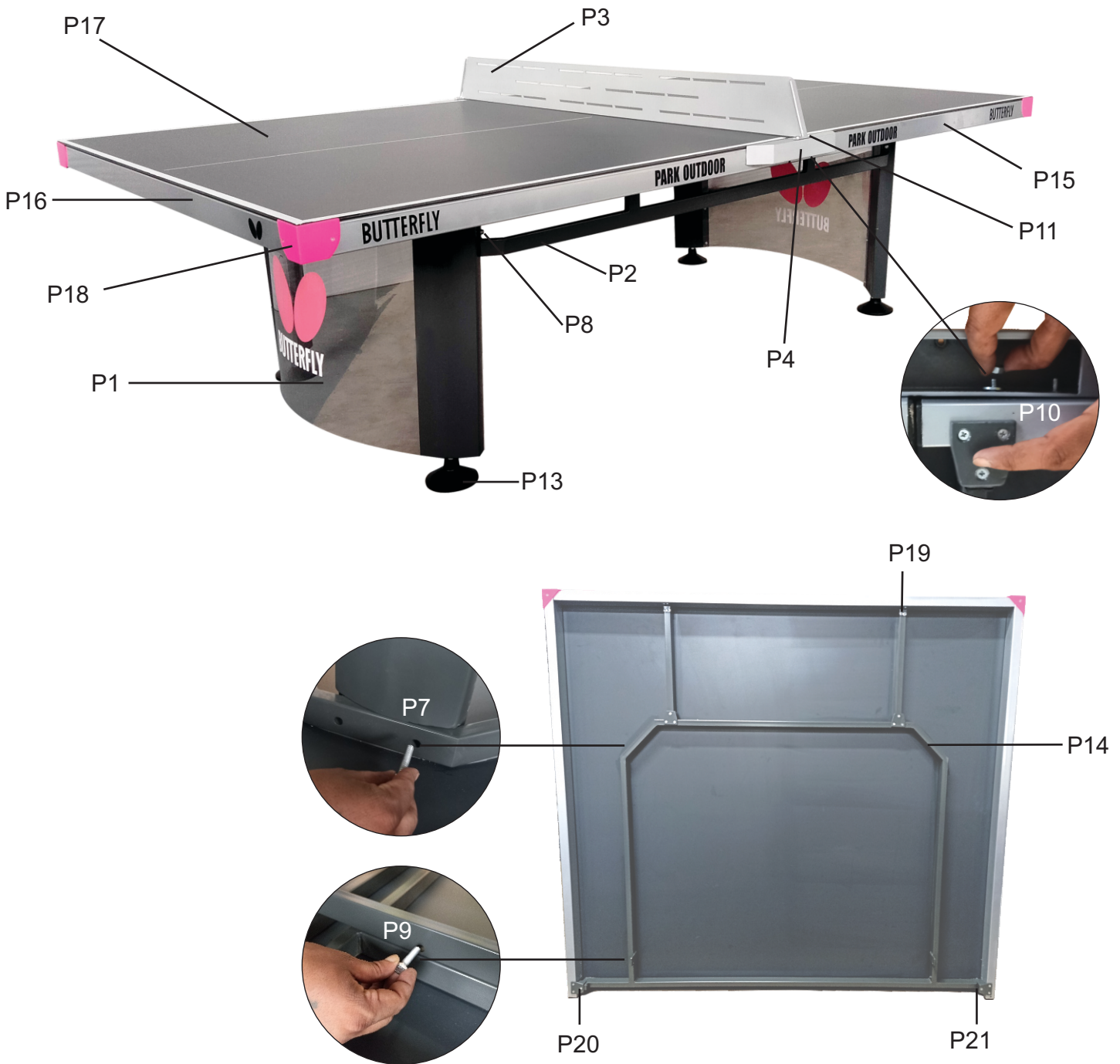
PARK OUTDOOR

ASSEMBLY INSTRUCTION



BUTTERFLY

PART LIST



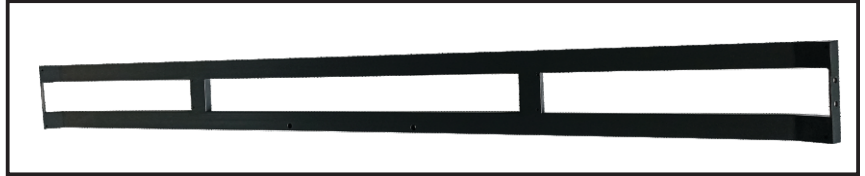
1. LEGS - 2 NOS
2. SIDE SUPPORT FRAME PIPE - 2 NOS.
3. STEEL NET - 1 NOS.
4. POST SET - 1 NOS.
5. SPANNER - 2 & 2.5 - 1 NOS.
6. SPANNER - 10 & 11 - 1 NOS.
- P7. BOLT TO ATTACH LEG WITH BACK SUPPORT FRAME (P14)
32x8MM - 8 NOS.
- P8. BOLT TO ATTACH LEG WITH SIDE SUPPORT FRAME (PP2)
SIZE- 20x6MM - 8 NOS.
- P9. NUT & BOLT TO ATTACH SIDE SUPPORT FRAME PIPE
(P2) WITH BACK SUPPORT FRAME (P14) SIZE - 38x8MM - 4 NOS.
- P10. NUT & BOLT TO ATTACH POST (P4) WITH SIDE FRAME PIPE
(P15)SIZE - 45x6MM - 8 NOS.
11. ALLEN KEY SCREW TO ATTACH NET WITH POST SIZE - 12x6 MM - 4 NOS.
12. ALLEN KEY SIZE - 1 NOS.
13. LEVELLERS SIZE 125MM ROUND - 4 NOS.
14. BACK SUPPORT FRAME ATTACHED WITH TABLE TOP & SIDE FRAME SIZE - 20X40MM- 2NOS.
15. SIDE FRAME PIPE SIZE - 60x30x1375MM - 4 NOS.
16. END FRAME PIPE SIZE 60x30x1472MM- 2 NOS.
17. TABLE TOP MELAMINE SIZE 1525x1370x7MM- 2 NOS.
18. OUTER CORNER SIZE 68MM - 4NOS.
19. BRACKET FOR FRAME PIPE - 40x20 - 4 NOS.
20. ALUMINIUM BRACKET - 8 NOS.
21. PLASTIC CAP FOR FRAME PIPES - 60X30MM- 4 NOS.

BUTTERFLY

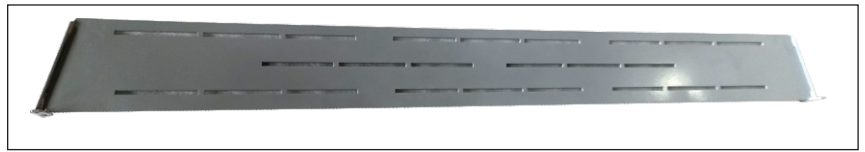
PART LIST



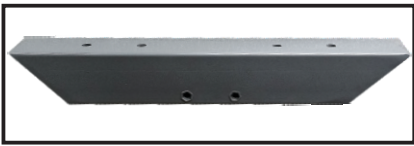
P1 - QTY. 2 NOS.



P2 - QTY. 2 NOS.



P3 - QTY. 1 NOS.



P4 - QTY. 2 NOS.



P5 - QTY. 1 NOS.



P6 - QTY. 1 NOS.



P7 - QTY. 8 NOS.



P8 - QTY. 8 NOS.



P9 - QTY. 4 NOS.



P10 - QTY. 8 NOS.



P11 - QTY. 4 NOS.



P12 - QTY. 1 NOS.



P13 - QTY. 4 NOS.

BUTTERFLY

STEP 1



Attach Leg (P1) with back support frame (P14) using bolt (P7) and tighten it with the help of spanner (P5) at both ends.

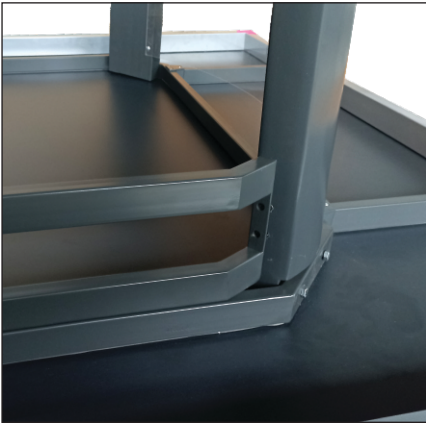
STEP 2



Attach the leveller (P13) with all legs (P1).

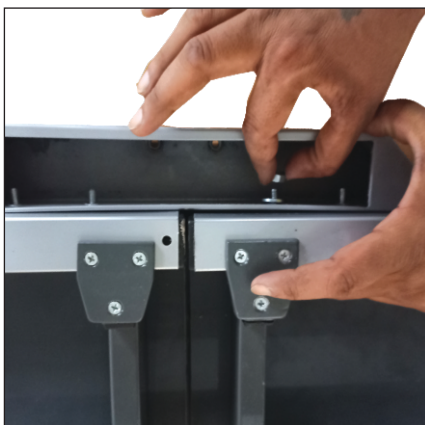
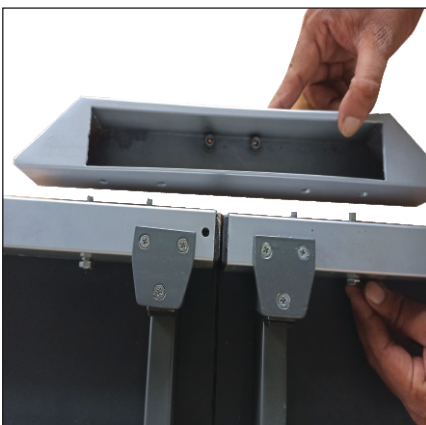
STEP 3

BUTTERFLY



Attach side support frame pipe (P2) with legs (P1) using bolt (P8) and and tighten it with the help of spanner (P6) at the same time attach side support frame pipe (P2) with back support frame (P14) using nut & bolt (P9) and tighten it with the help of spanner (P5) .

STEP 4



Attach post (P4) with side frame pipe (P15) using nut & bolt (P10) and tighten it with the help of spanner (P5) at both sides.

BUTTERFLY

STEP 5



Place the table on the floor and attach the net (P3) with post (P4) using allen key screw (P11) and tighten it with the help of allen key (P12).

YOUR OUTDOOR TABLE IS READY TO PLAY



SAFETY INSTRUCTIONS

Children below 14 years should not assemble the table.
This table is suitable for indoor and outdoor use.
Always cover the table when not in use